

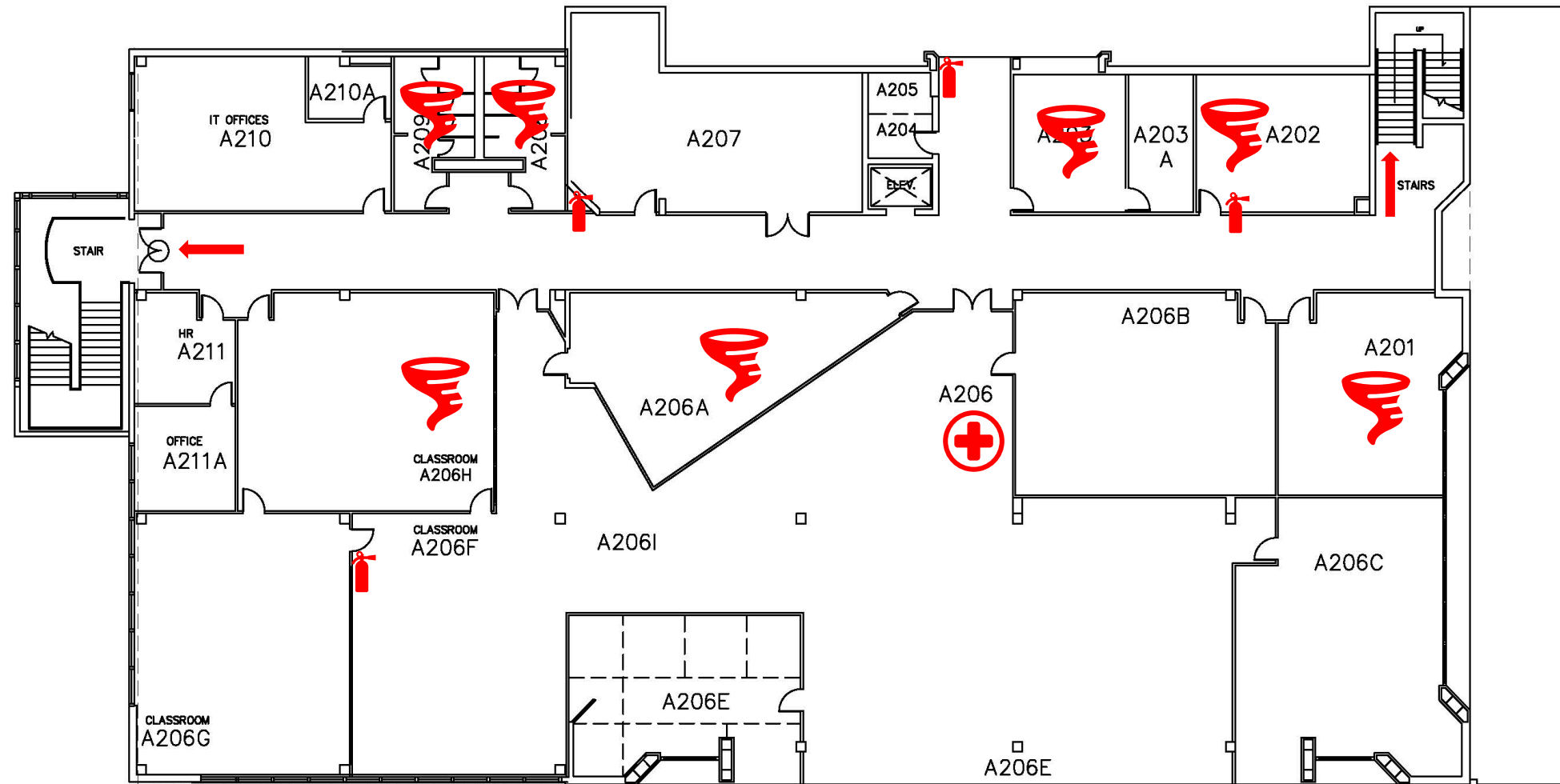
Cedar Valley Campus Building A 1st Floor

- ← Emergency exits
- 🧯 Fire extinguishers
- ❤️ AED located in Nurse's Office 104B
- 🌀 Tornado safer zones
- 🩹 First aid kit located in 108






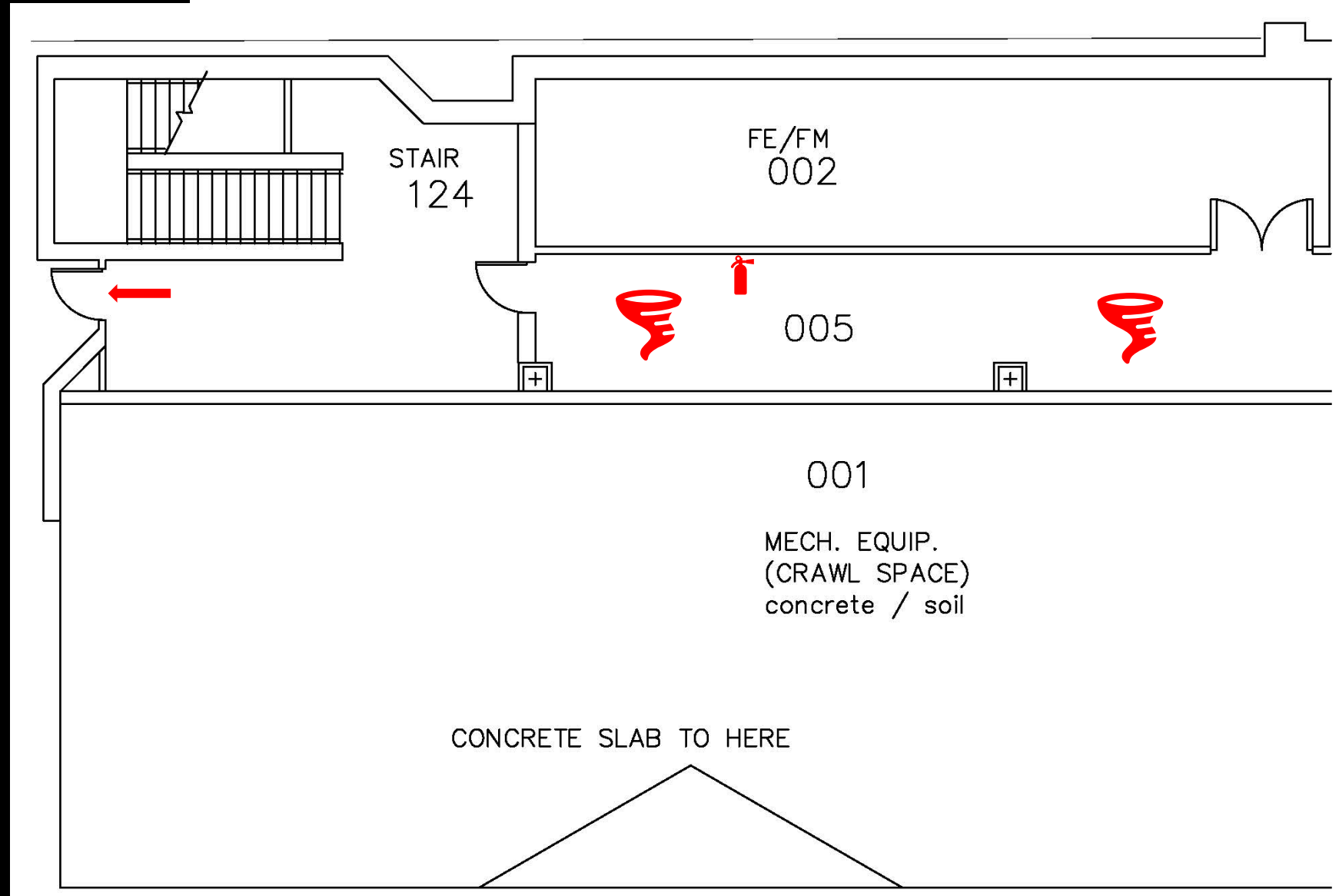
Cedar Valley Campus Building A Second Floor

- ← Emergency exits
- Fire extinguishers
- Tornado safer zones
- (+) First aid kit located in A206

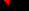
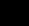



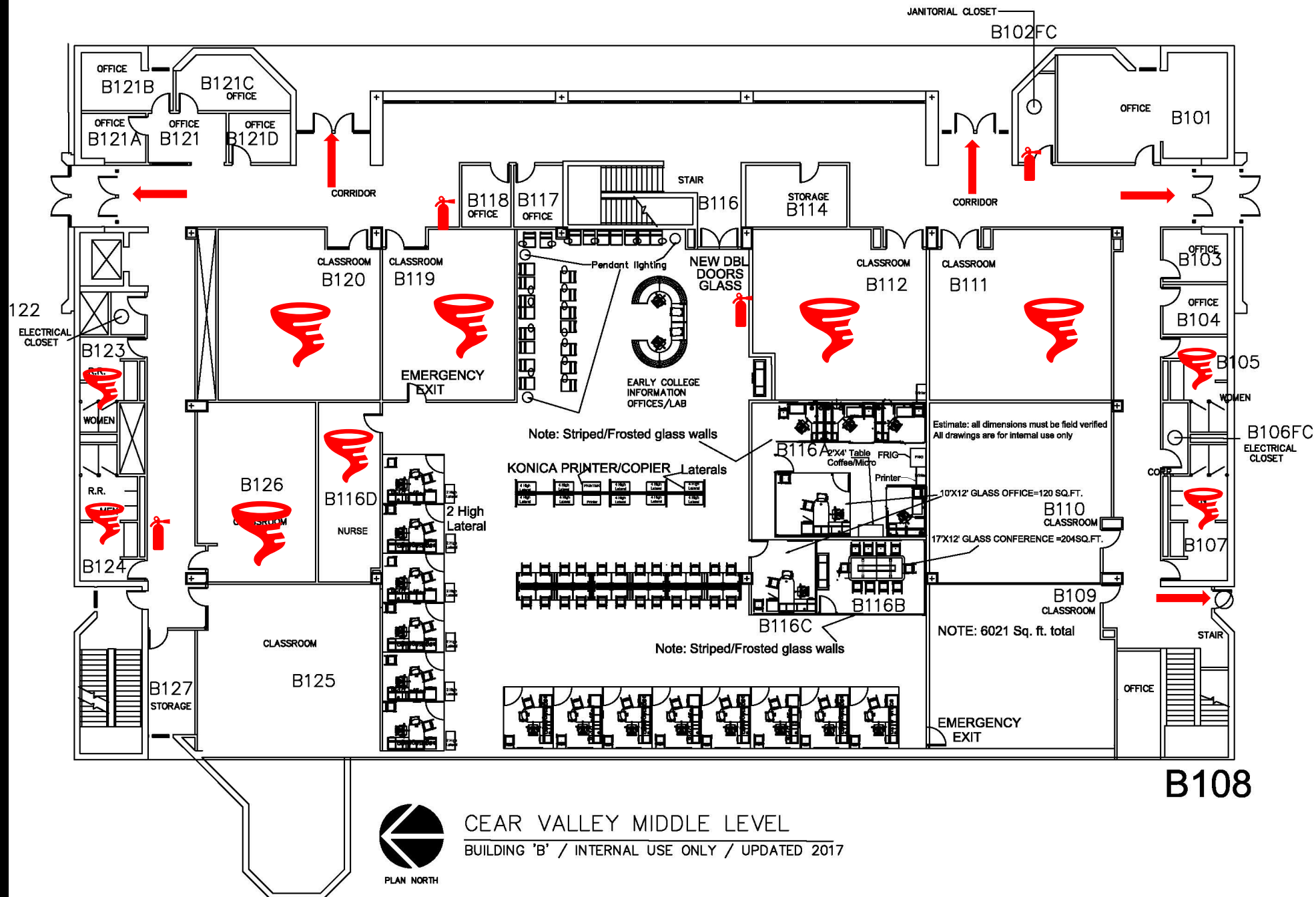
Cedar Valley Campus Building B Ground Floor

-  Emergency exits
-  Fire extinguishers
-  Tornado safer zones







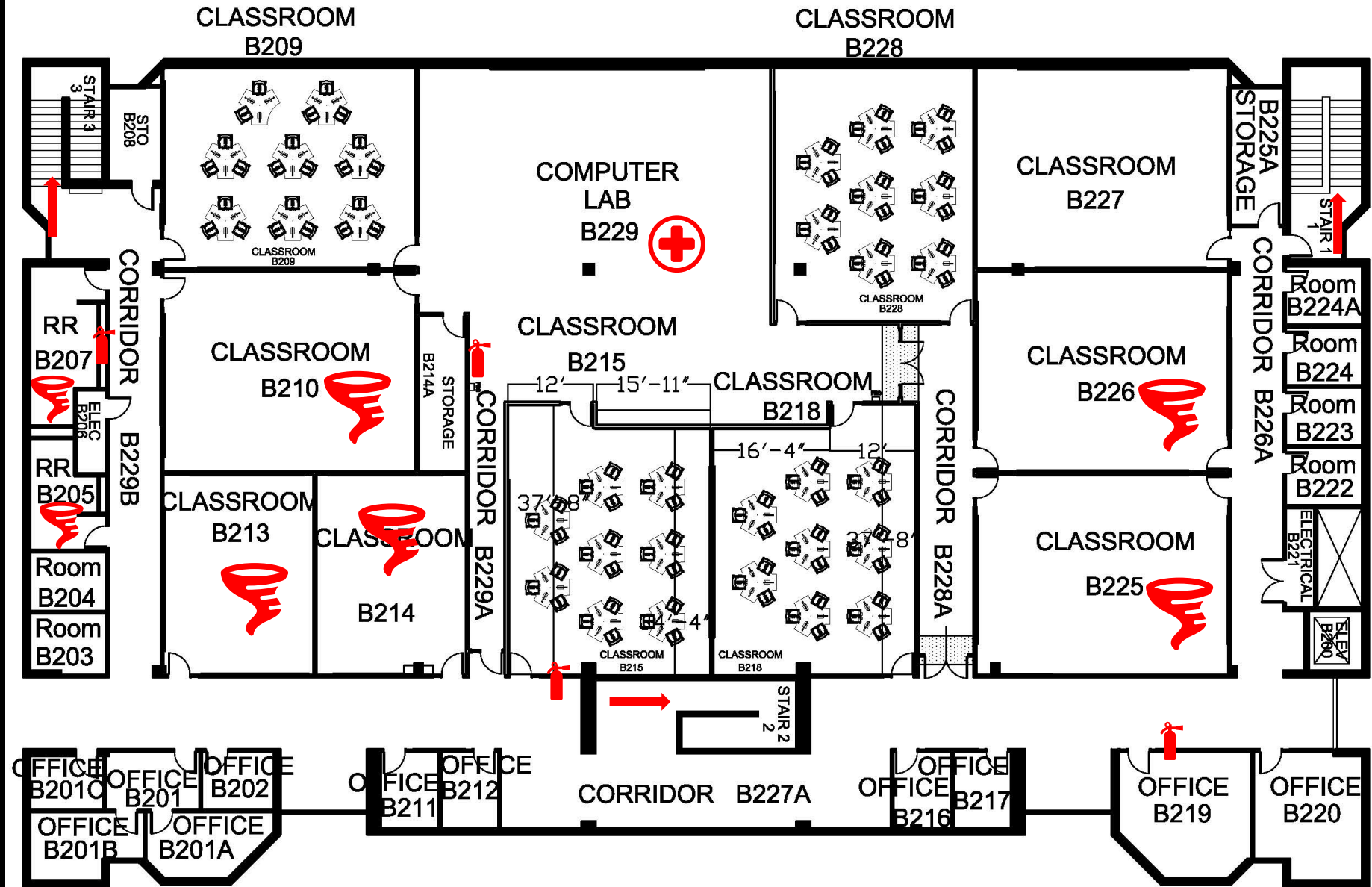
Cedar Valley Campus Building B First Floor

-  Emergency exits
-  Fire extinguishers
-  Tornado safer zones








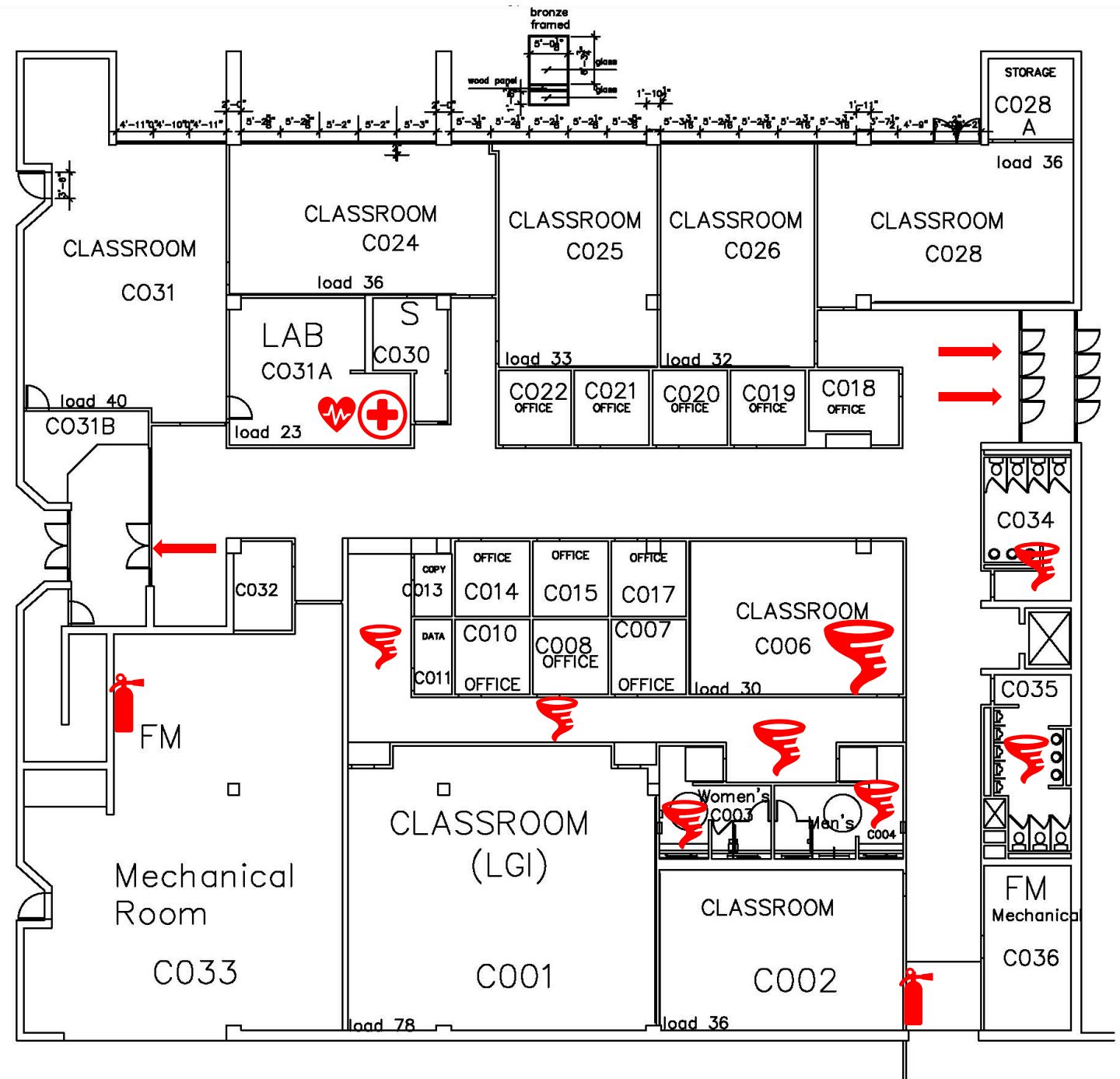
Cedar Valley Campus Building B Second Floor

-  Emergency exits
-  Fire extinguishers
-  Tornado safer zones
-  First aid kit located in B229



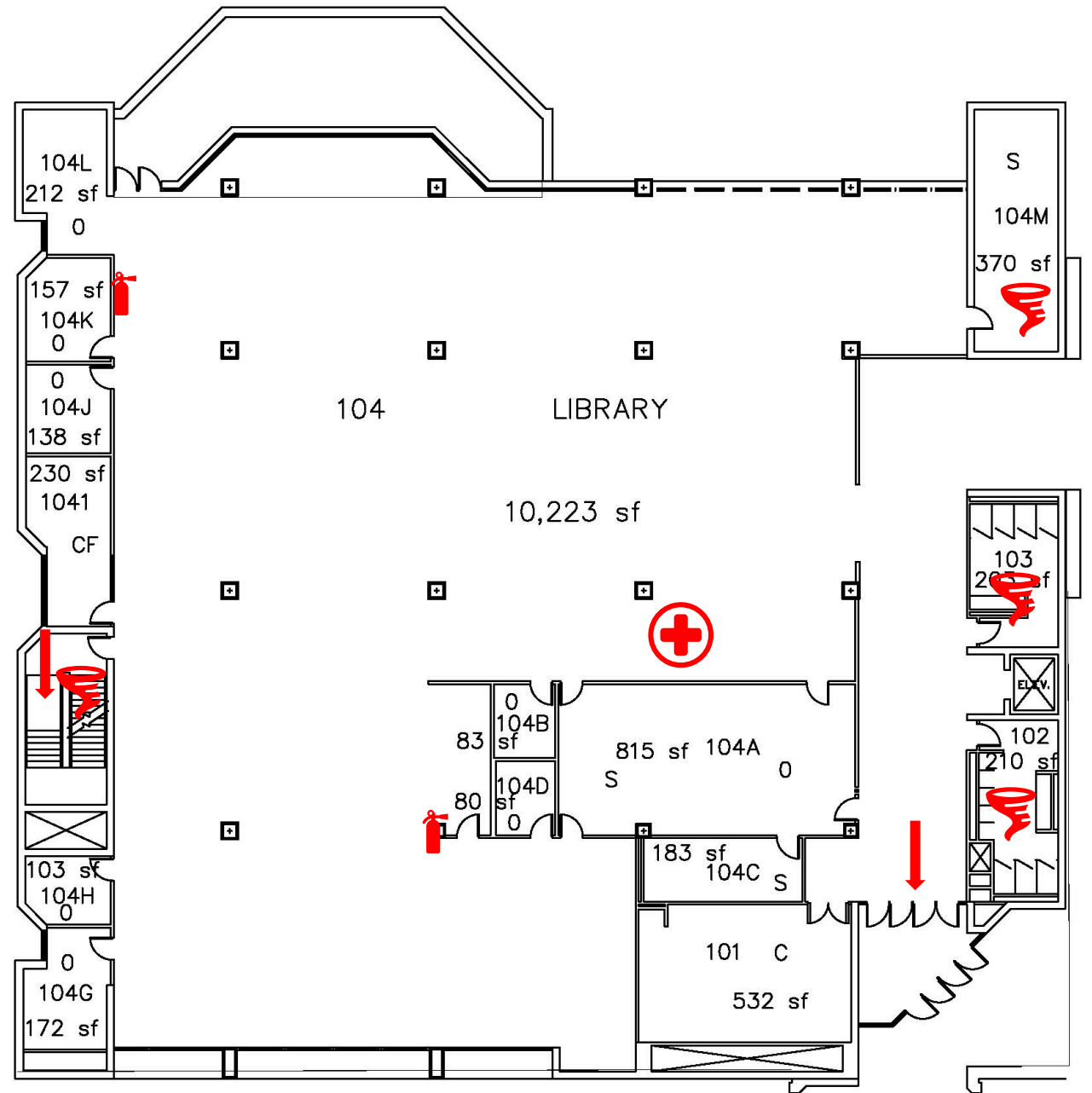
Cedar Valley Campus Building C Ground Floor

-  AED located in Lab C031A
-  Emergency exits
-  Fire extinguishers
-  Tornado safer zones
-  First aid kit located in C031A



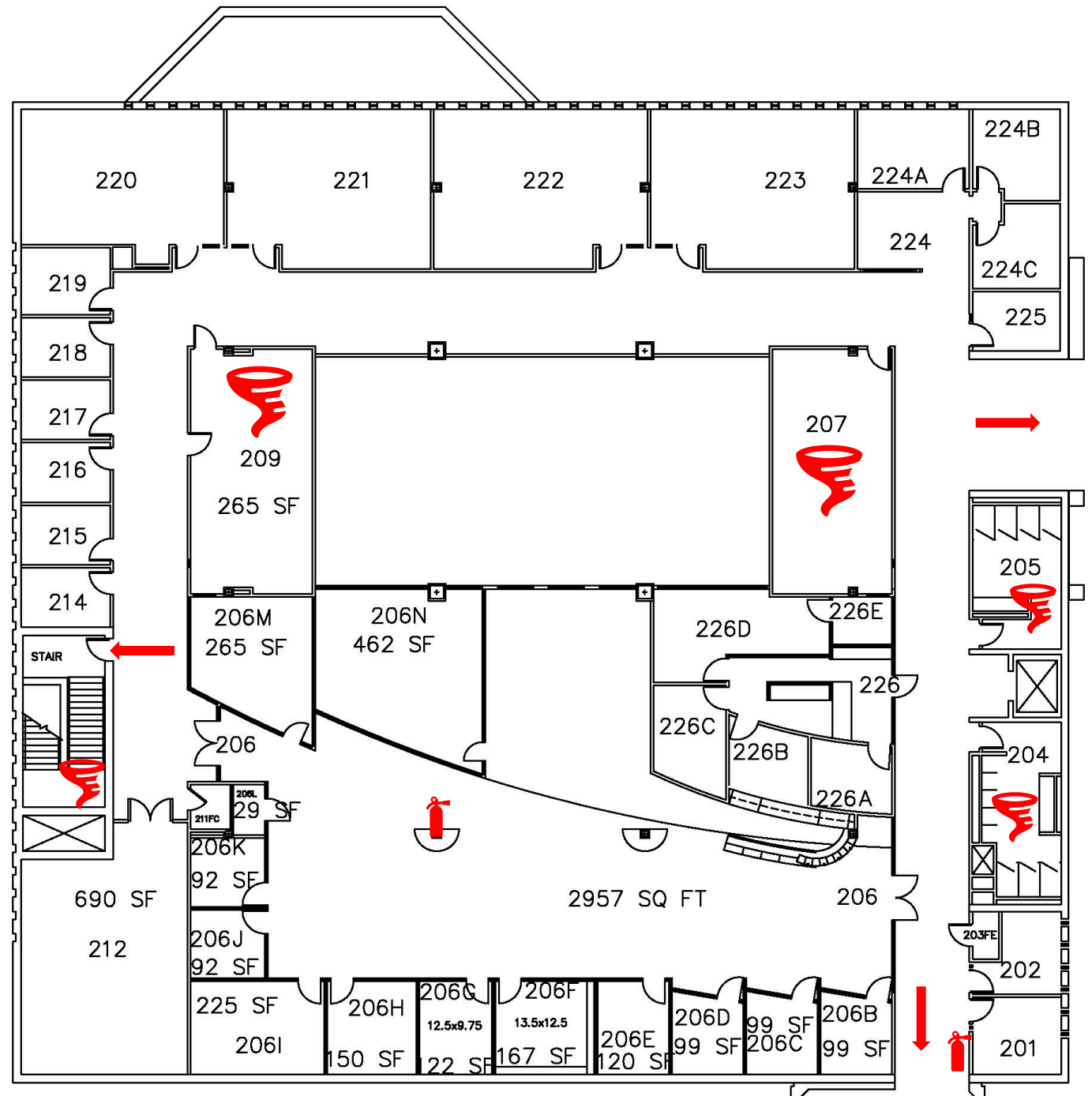
Cedar Valley Campus Building C First Floor

- ← Emergency exits
- Fire extinguishers
- ⊕ First aid kit located at librarian desk
- Tornado safer zones



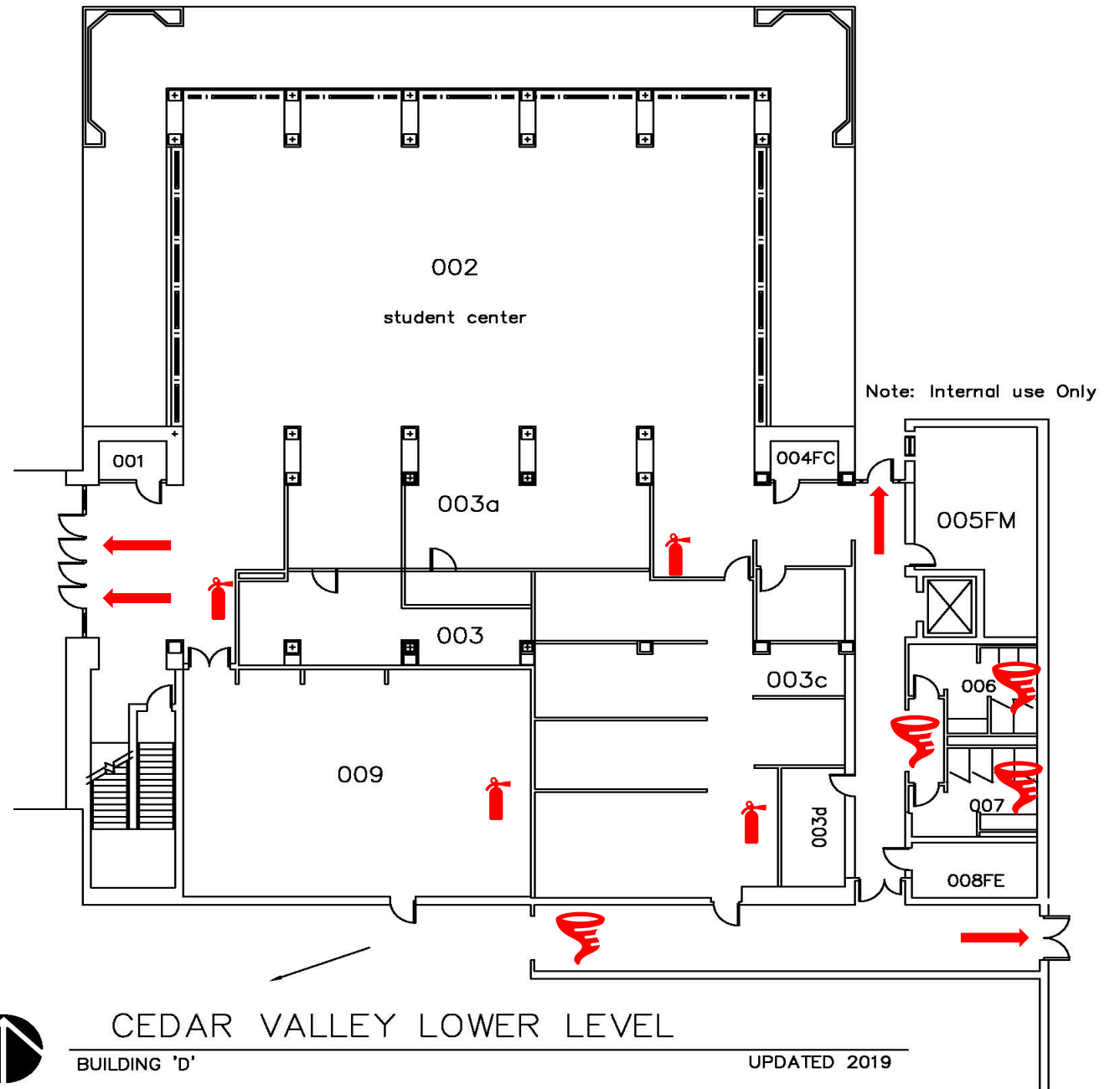
Cedar Valley Campus Building C Second Floor

- ← Emergency exits
- Fire extinguishers
- Tornado safer zones



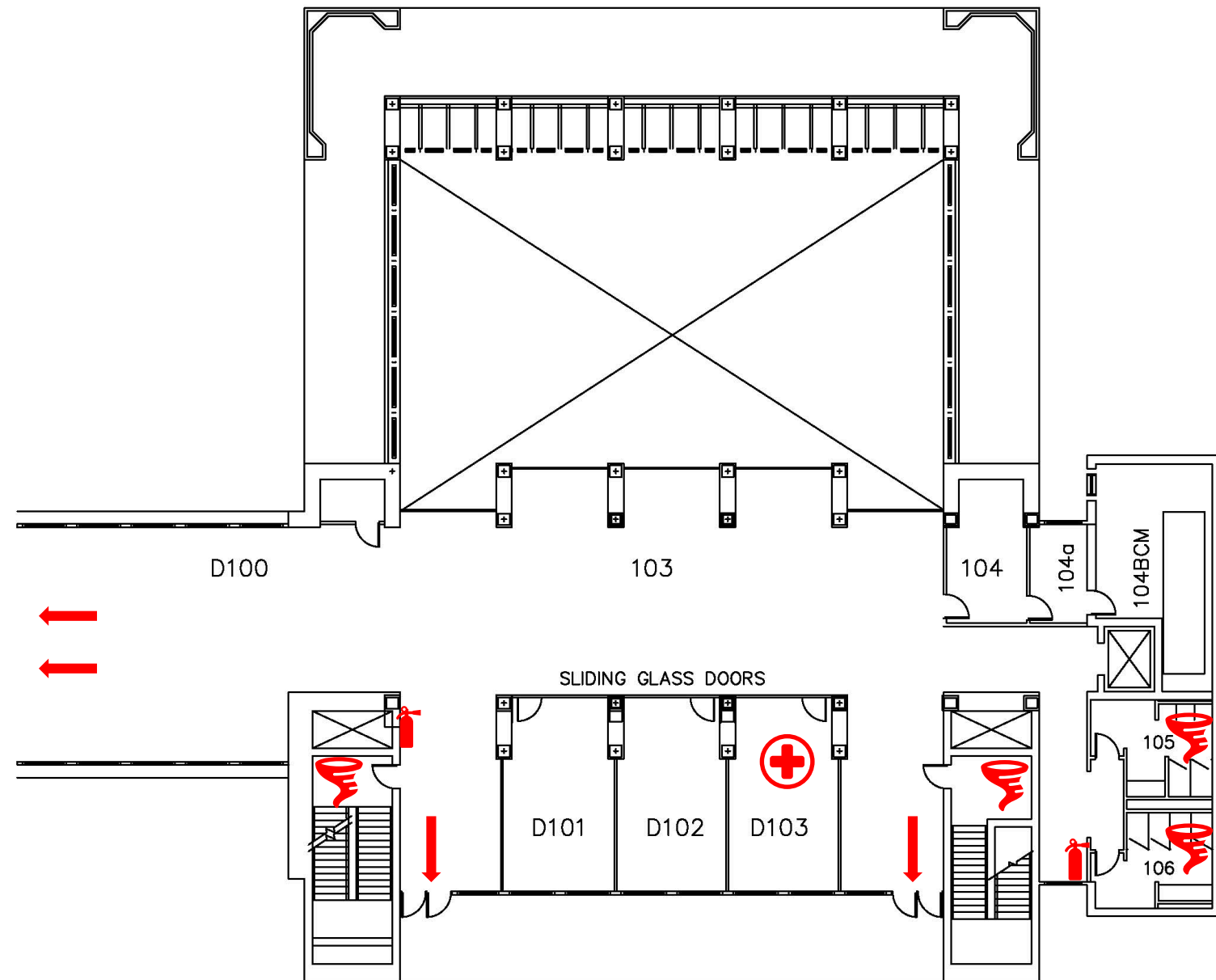
Cedar Valley Campus Building D Ground Floor

- ← Emergency exits
- Fire extinguishers
- Tornado safer zones



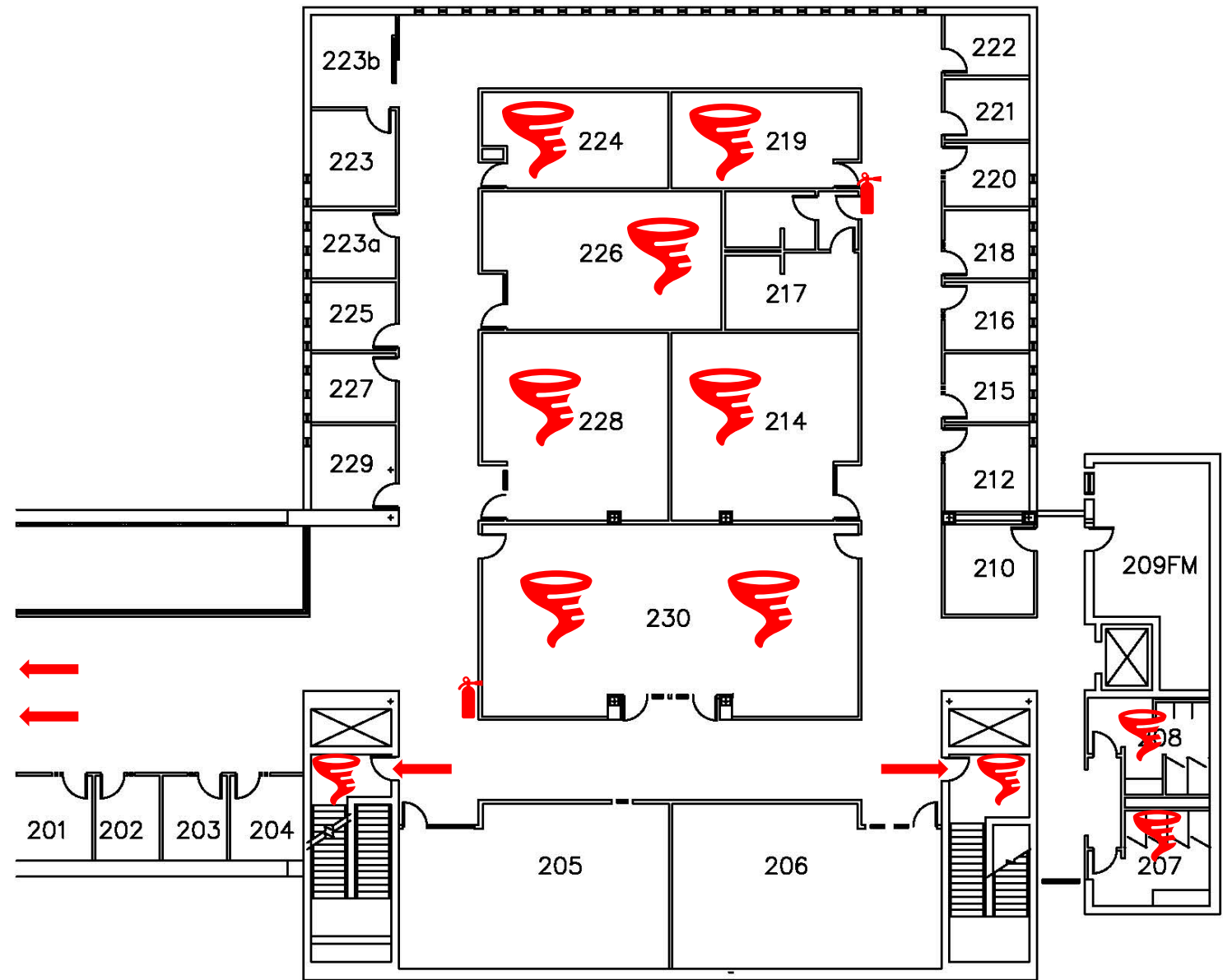
Cedar Valley Campus Building D First Floor

- ← Emergency exits
- Fire extinguishers
- Tornado safer zones
- ⊕ First aid kit located in D103








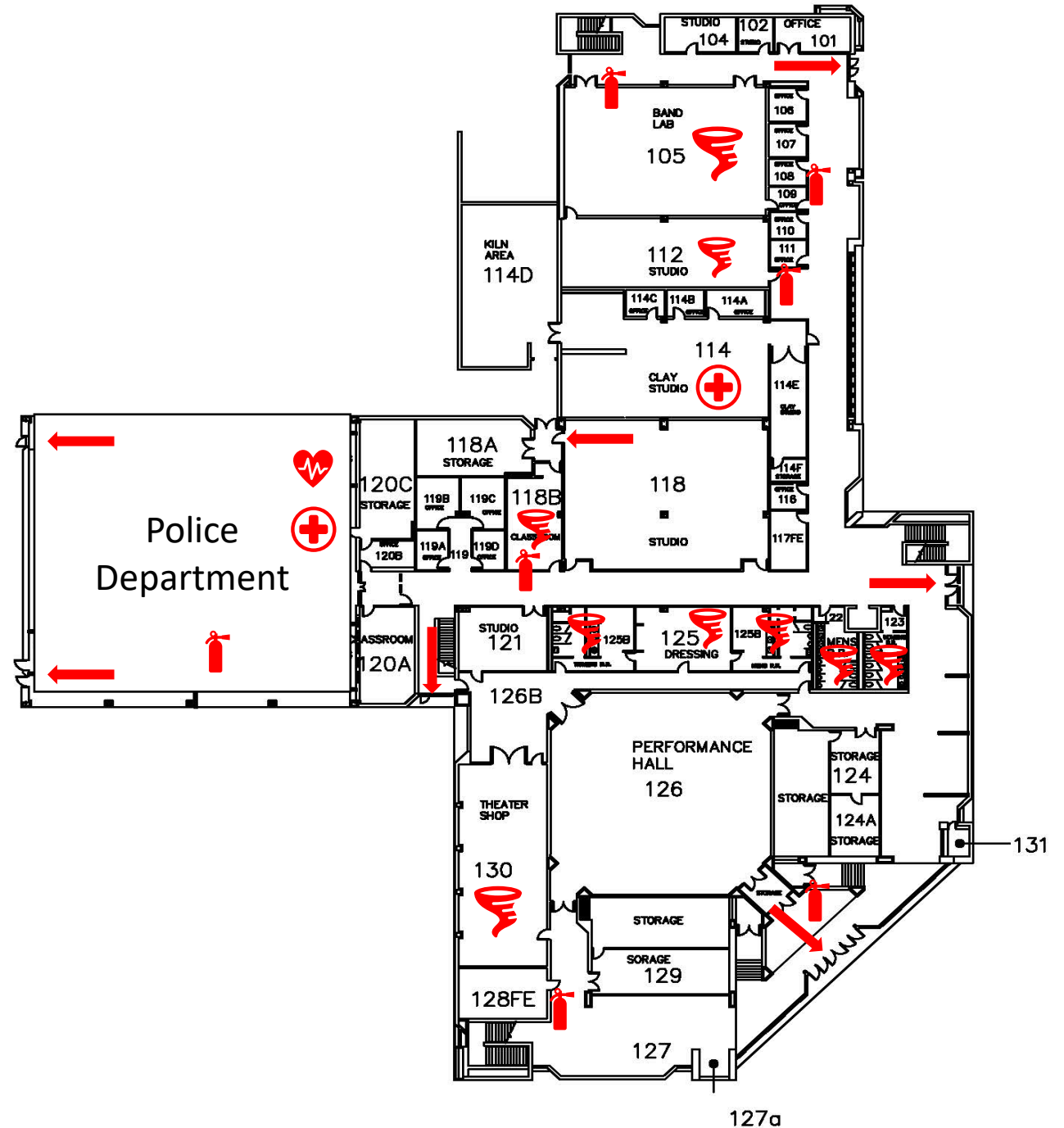
Cedar Valley Campus Building D Second Floor

- ← Emergency exits
- 🧯 Fire extinguishers
- 🌀 Tornado safer zones



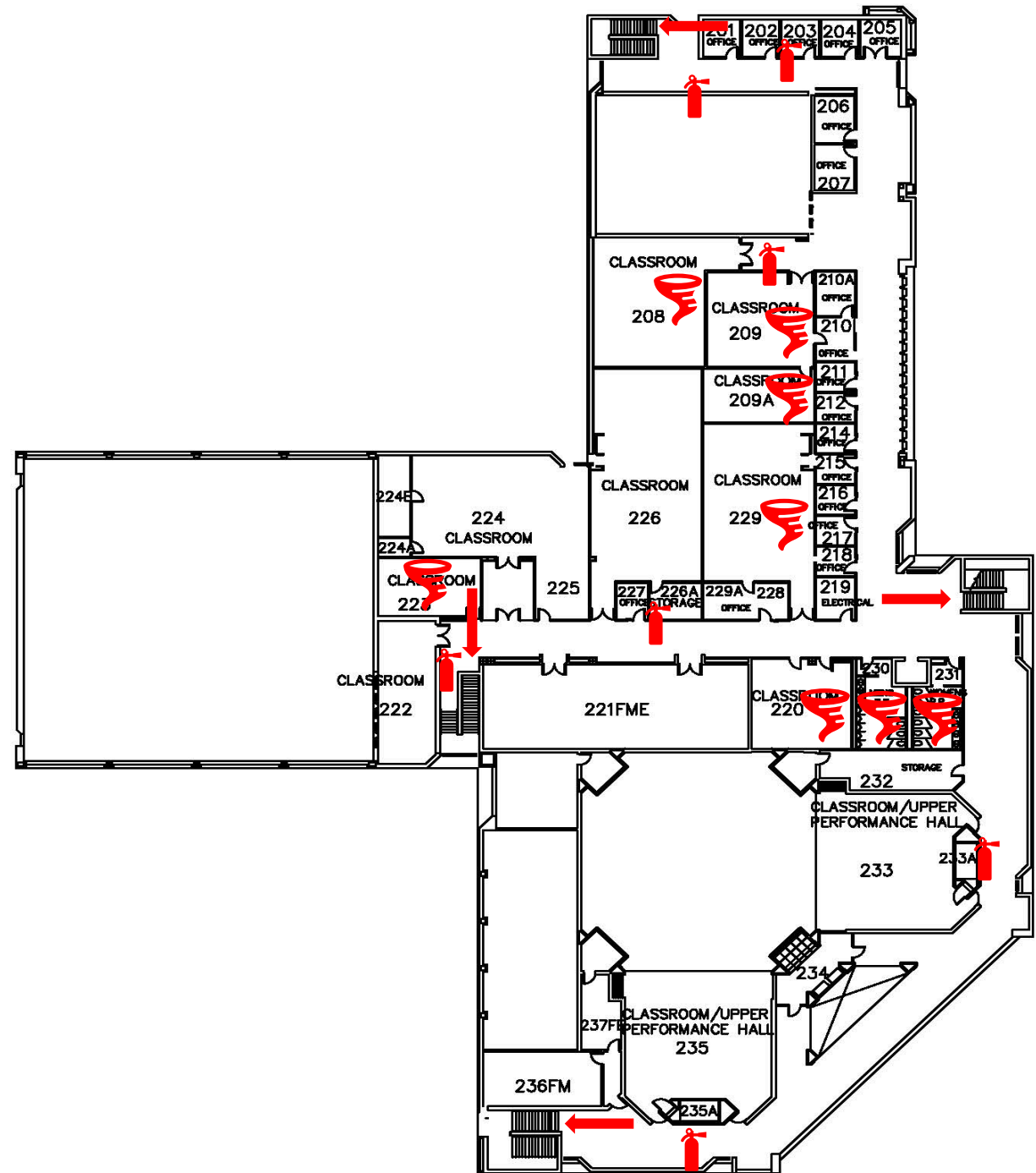
Cedar Valley Campus Building E First Floor

-  AED located in Police Office 120
-  Emergency exits
-  Fire extinguishers
-  First aid kits located in 114 and 120
-  Tornado safer zones







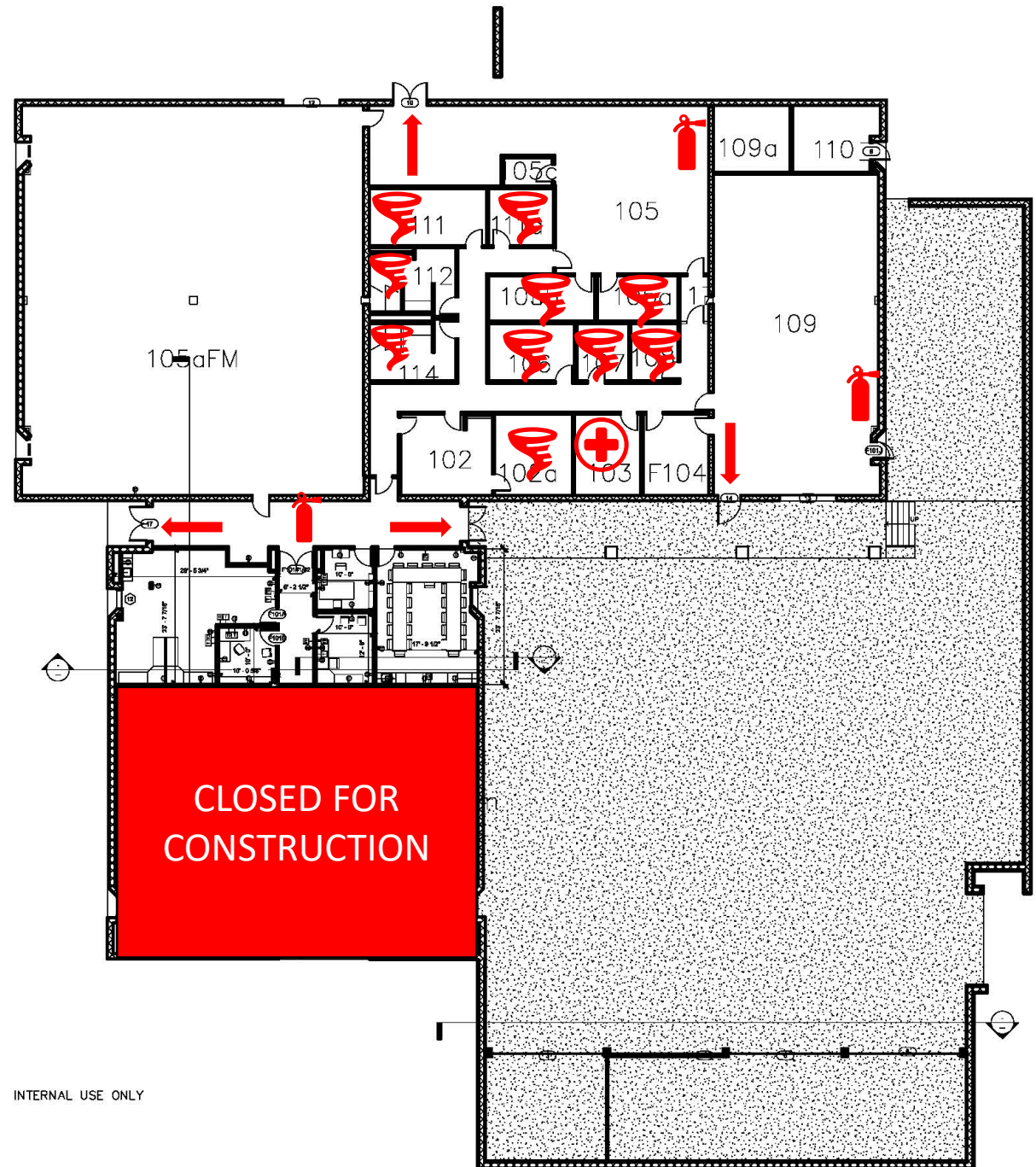
Cedar Valley Campus Building E Second Floor

- ← Emergency exits
- 🧯 Fire extinguishers
- 🌀 Tornado safer zones








Cedar Valley Campus Building F First Floor

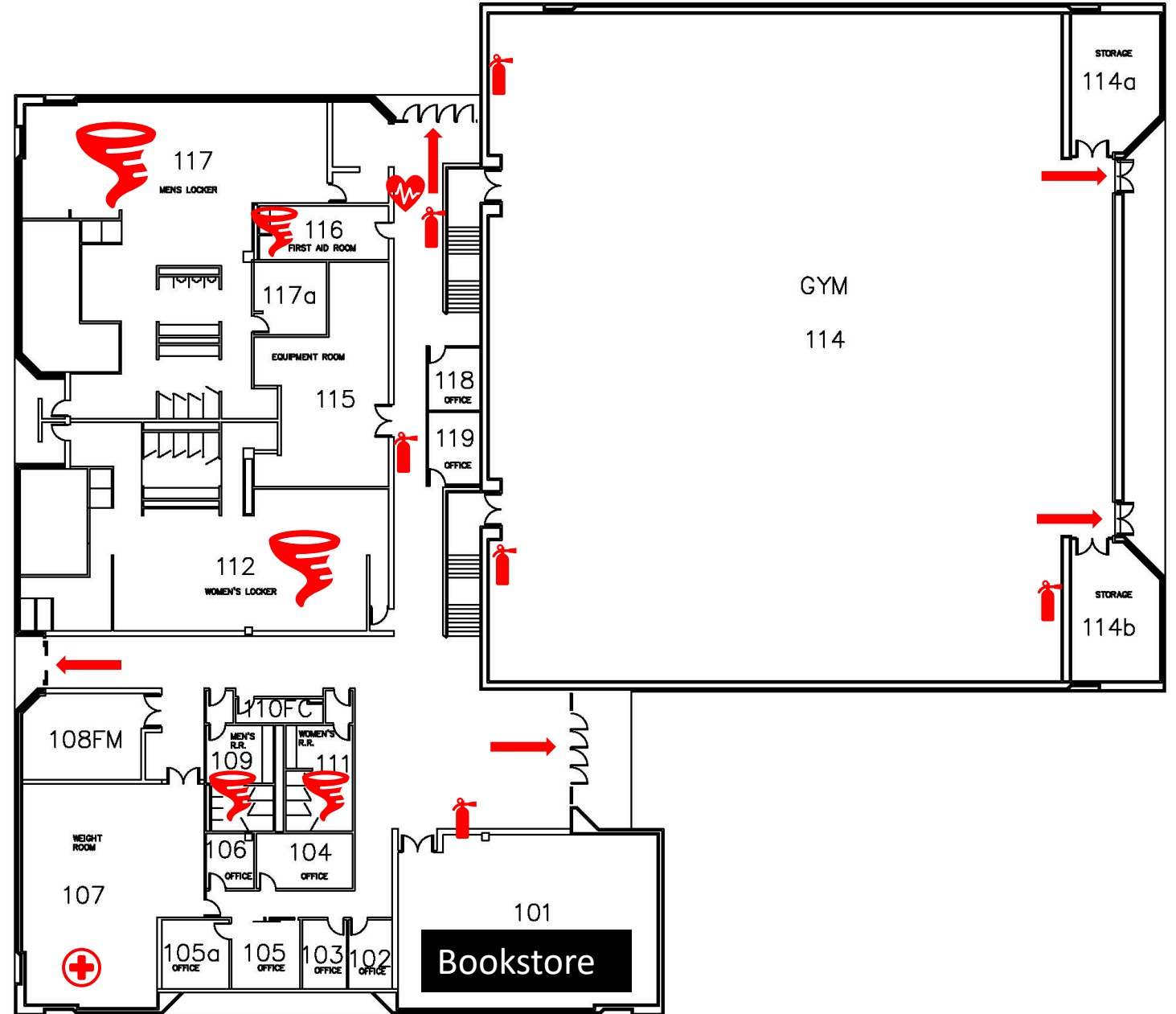
-  First aid kit located in 103
-  Tornado safer zones
-  Emergency exits
-  Fire extinguishers







INTERNAL USE ONLY

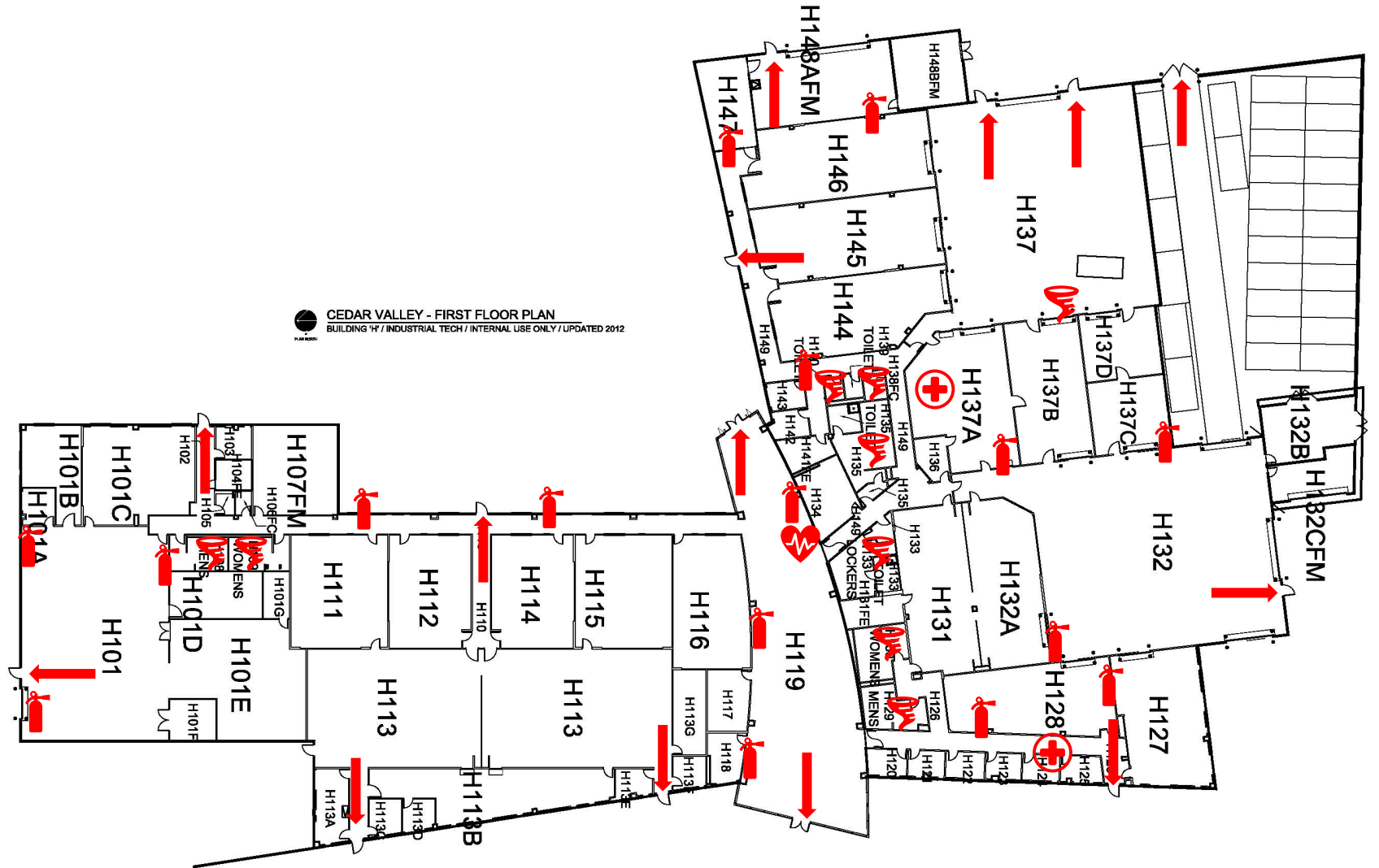
Cedar Valley Campus Building G First Floor

-  AED located outside of room 116
-  First aid kit located in the weight room
-  Emergency exits
-  Fire extinguishers
-  Tornado safer zones







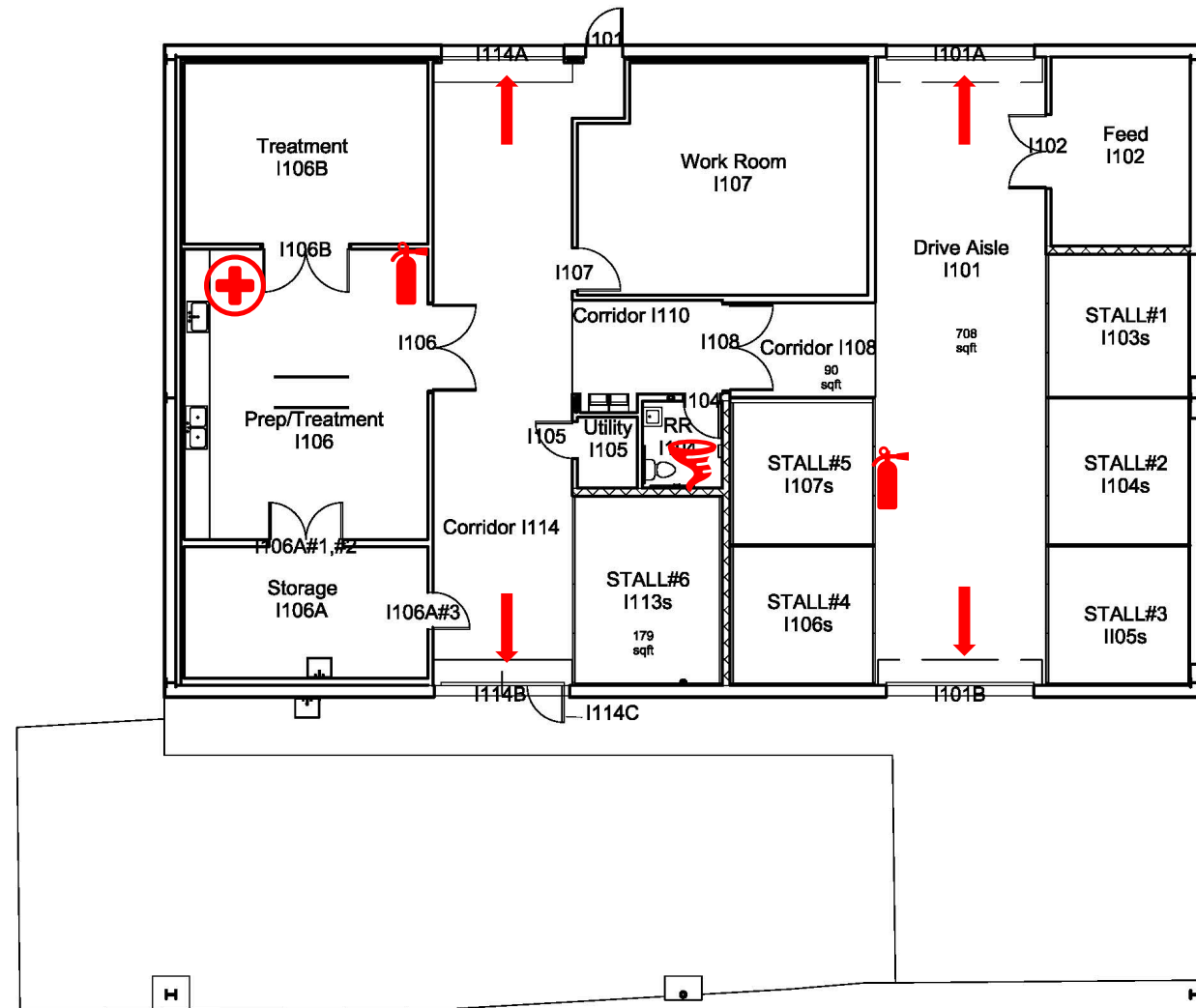
Cedar Valley Campus Building H First Floor

-  AED located in Lobby H119
-  First aid kit located near H123 and 137
-  Emergency exits
-  Fire extinguishers






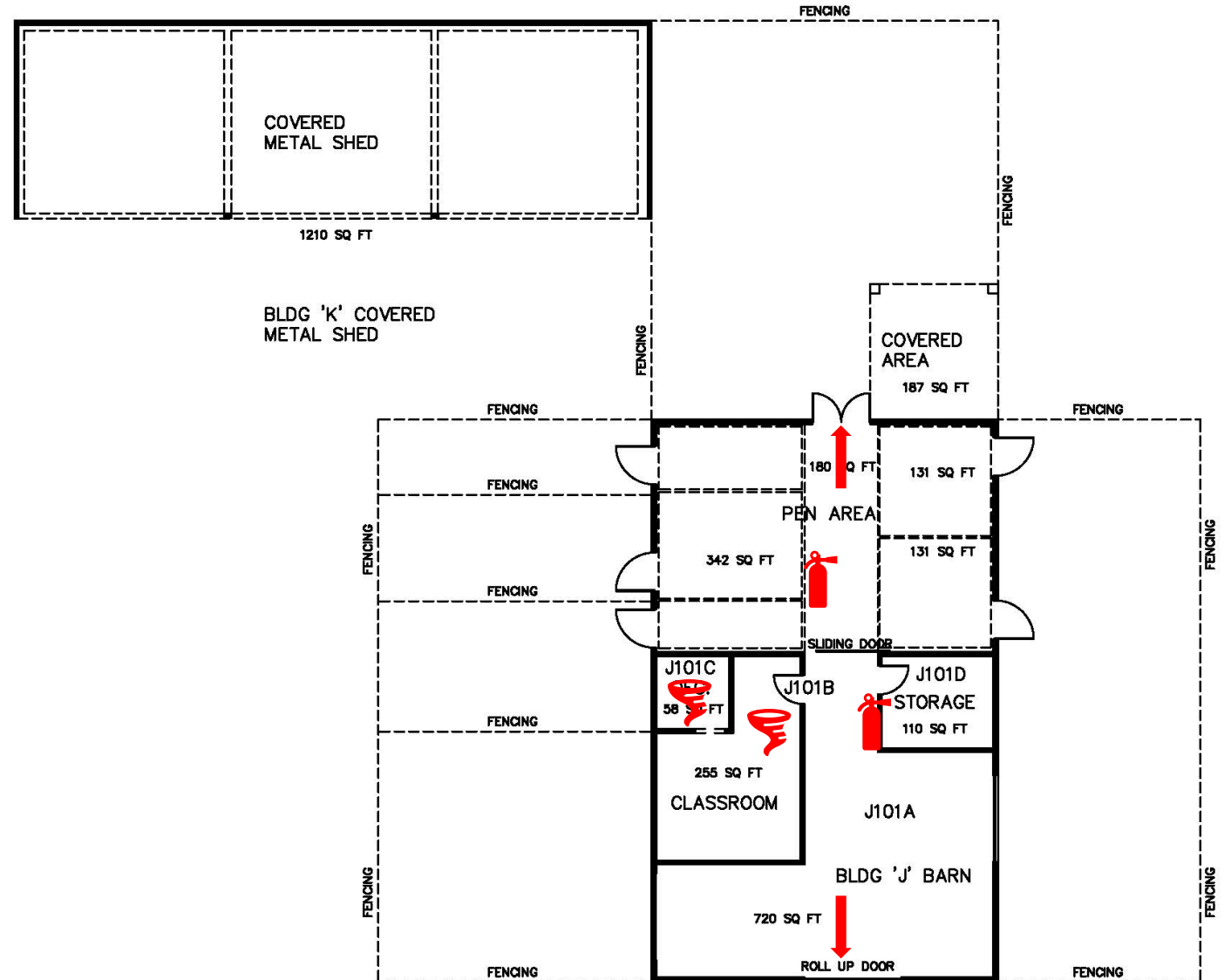
Cedar Valley Campus Building I 1st Floor

-  First aid kit located in 106
-  Tornado safer zones
-  Emergency exits
-  Fire extinguishers



Cedar Valley Campus Building J & K (Pig Barn & Pen)

-  Tornado safer zones
-  Emergency exits
-  Fire extinguishers



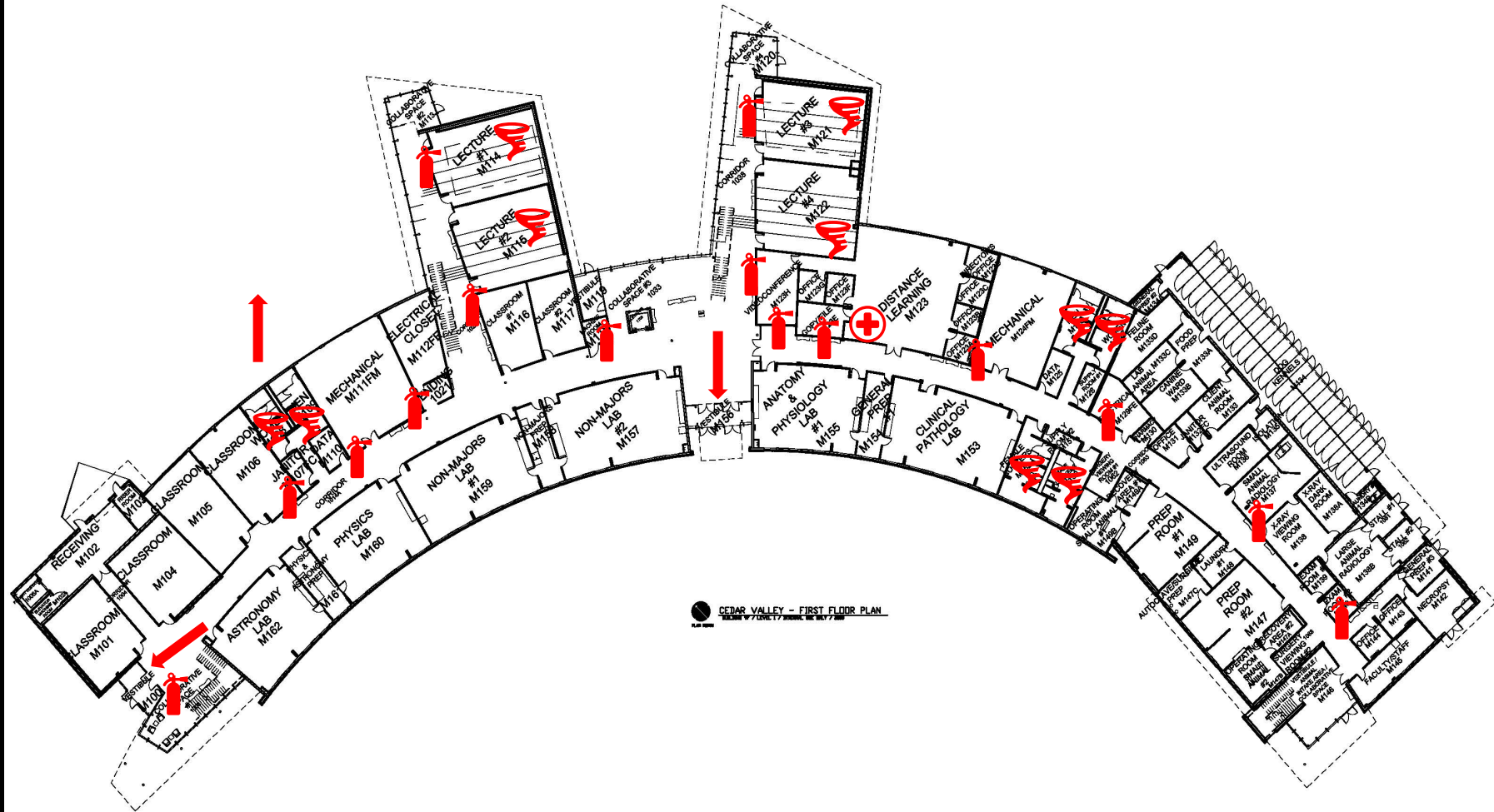
CLOSED FOR
CONSTRUCTION

The floor plan shows a complex arrangement of rooms on the second floor. Key areas include:




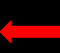

- Offices:** Numerous individual offices are labeled, such as L147, L146, L144, L143, L142, L141, L140, L139, L138, L148, L149, L150, L151, L152, L153, L154, L155, L156, L157, L159, L158, L136, L134, L133, L132, L131, L130, L129, L127, L125, L124, L123, L122, L121, L120, L119, L118, L117, L116, L115, L114, L113, L113A, L113B, L113C, L113D, L112, L111, L108, L109, L104, L105, L103, L102, L101, L100, L99, L98, L97, L96, L95, L94, L93, L92, L91, L90, L89, L88, L87, L86, L85, L84, L83, L82, L81, L80, L79, L78, L77, L76, L75, L74, L73, L72, L71, L70, L69, L68, L67, L66, L65, L64, L63, L62, L61, L60, L59, L58, L57, L56, L55, L54, L53, L52, L51, L50, L49, L48, L47, L46, L45, L44, L43, L42, L41, L40, L39, L38, L37, L36, L35, L34, L33, L32, L31, L30, L29, L28, L27, L26, L25, L24, L23, L22, L21, L20, L19, L18, L17, L16, L15, L14, L13, L12, L11, L10, L9, L8, L7, L6, L5, L4, L3, L2, L1.
- Common Areas:** Includes a large central area labeled "36-STUDENT E-CONNECT STATIONS", a "BOOK STORE" (L110), a "MECHANICAL" room (L118), a "KITCHEN" (L119), and a "RESTROOM" (L112).
- Specialized Rooms:** Includes a "TRAINING ROOM" (L112), a "TESTING" area (L113), a "PRIVATE TESTING" room (L113D), a "STORAGE" room (L111), and a "CASHIERS" area (L104).
- Other Features:** Includes a "STORAGE" room (L164B), a "STORAGE" room (L164A), a "STORAGE" room (L164), a "STORAGE" room (L163), a "STORAGE" room (L162), a "STORAGE" room (L161), a "STORAGE" room (L160), a "STORAGE" room (L159), a "STORAGE" room (L158), a "STORAGE" room (L157), a "STORAGE" room (L156), a "STORAGE" room (L155), a "STORAGE" room (L154), a "STORAGE" room (L153), a "STORAGE" room (L152), a "STORAGE" room (L151), a "STORAGE" room (L150), a "STORAGE" room (L149), a "STORAGE" room (L148), a "STORAGE" room (L147), a "STORAGE" room (L146), a "STORAGE" room (L145), a "STORAGE" room (L144), a "STORAGE" room (L143), a "STORAGE" room (L142), a "STORAGE" room (L141), a "STORAGE" room (L140), a "STORAGE" room (L139), a "STORAGE" room (L138), a "STORAGE" room (L137), a "STORAGE" room (L136), a "STORAGE" room (L135), a "STORAGE" room (L134), a "STORAGE" room (L133), a "STORAGE" room (L132), a "STORAGE" room (L131), a "STORAGE" room (L130), a "STORAGE" room (L129), a "STORAGE" room (L128), a "STORAGE" room (L127), a "STORAGE" room (L126), a "STORAGE" room (L125), a "STORAGE" room (L124), a "STORAGE" room (L123), a "STORAGE" room (L122), a "STORAGE" room (L121), a "STORAGE" room (L120), a "STORAGE" room (L119), a "STORAGE" room (L118), a "STORAGE" room (L117), a "STORAGE" room (L116), a "STORAGE" room (L115), a "STORAGE" room (L114), a "STORAGE" room (L113), a "STORAGE" room (L112), a "STORAGE" room (L111), a "STORAGE" room (L110), a "STORAGE" room (L109), a "STORAGE" room (L108), a "STORAGE" room (L107), a "STORAGE" room (L106), a "STORAGE" room (L105), a "STORAGE" room (L104), a "STORAGE" room (L103), a "STORAGE" room (L102), a "STORAGE" room (L101), a "STORAGE" room (L100), a "STORAGE" room (L99), a "STORAGE" room (L98), a "STORAGE" room (L97), a "STORAGE" room (L96), a "STORAGE" room (L95), a "STORAGE" room (L94), a "STORAGE" room (L93), a "STORAGE" room (L92), a "STORAGE" room (L91), a "STORAGE" room (L90), a "STORAGE" room (L89), a "STORAGE" room (L88), a "STORAGE" room (L87), a "STORAGE" room (L86), a "STORAGE" room (L85), a "STORAGE" room (L84), a "STORAGE" room (L83), a "STORAGE" room (L82), a "STORAGE" room (L81), a "STORAGE" room (L80), a "STORAGE" room (L79), a "STORAGE" room (L78), a "STORAGE" room (L77), a "STORAGE" room (L76), a "STORAGE" room (L75), a "STORAGE" room (L74), a "STORAGE" room (L73), a "STORAGE" room (L72), a "STORAGE" room (L71), a "STORAGE" room (L70), a "STORAGE" room (L69), a "STORAGE" room (L68), a "STORAGE" room (L67), a "STORAGE" room (L66), a "STORAGE" room (L65), a "STORAGE" room (L64), a "STORAGE" room (L63), a "STORAGE" room (L62), a "STORAGE" room (L61), a "STORAGE" room (L60), a "STORAGE" room (L59), a "STORAGE" room (L58), a "STORAGE" room (L57), a "STORAGE" room (L56), a "STORAGE" room (L55), a "STORAGE" room (L54), a "STORAGE" room (L53), a "STORAGE" room (L52), a "STORAGE" room (L51), a "STORAGE" room (L50), a "STORAGE" room (L49), a "STORAGE" room (L48), a "STORAGE" room (L47), a "STORAGE" room (L46), a "STORAGE" room (L45), a "STORAGE" room (L44), a "STORAGE" room (L43), a "STORAGE" room (L42), a "STORAGE" room (L41), a "STORAGE" room (L40), a "STORAGE" room (L39), a "STORAGE" room (L38), a "STORAGE" room (L37), a "STORAGE" room (L36), a "STORAGE" room (L35), a "STORAGE" room (L34), a "STORAGE" room (L33), a "STORAGE" room (L32), a "STORAGE" room (L31), a "STORAGE" room (L30), a "STORAGE" room (L29), a "STORAGE" room (L28), a "STORAGE" room (L27), a "STORAGE" room (L26), a "STORAGE" room (L25), a "STORAGE" room (L24), a "STORAGE" room (L23), a "STORAGE" room (L22), a "STORAGE" room (L21), a "STORAGE" room (L20), a "STORAGE" room (L19), a "STORAGE" room (L18), a "STORAGE" room (L17), a "STORAGE" room (L16), a "STORAGE" room (L15), a "STORAGE" room (L14), a "STORAGE" room (L13), a "STORAGE" room (L12), a "STORAGE" room (L11), a "STORAGE" room (L10), a "STORAGE" room (L9), a "STORAGE" room (L8), a "STORAGE" room (L7), a "STORAGE" room (L6), a "STORAGE" room (L5), a "STORAGE" room (L4), a "STORAGE" room (L3), a "STORAGE" room (L2), a "STORAGE" room (L1).

Cedar Valley Campus Building M First Floor

- 🌀 Tornado safer zones
- ← Emergency exits
- 🧯 Fire extinguishers
- 🩹 First aid kit located in M123



Cedar Valley Campus Building M Second Floor

-  AED located near 217
-  First aid kit located in foyer and 217
-  Tornado safer zones
-  Emergency exits
-  Fire extinguishers

